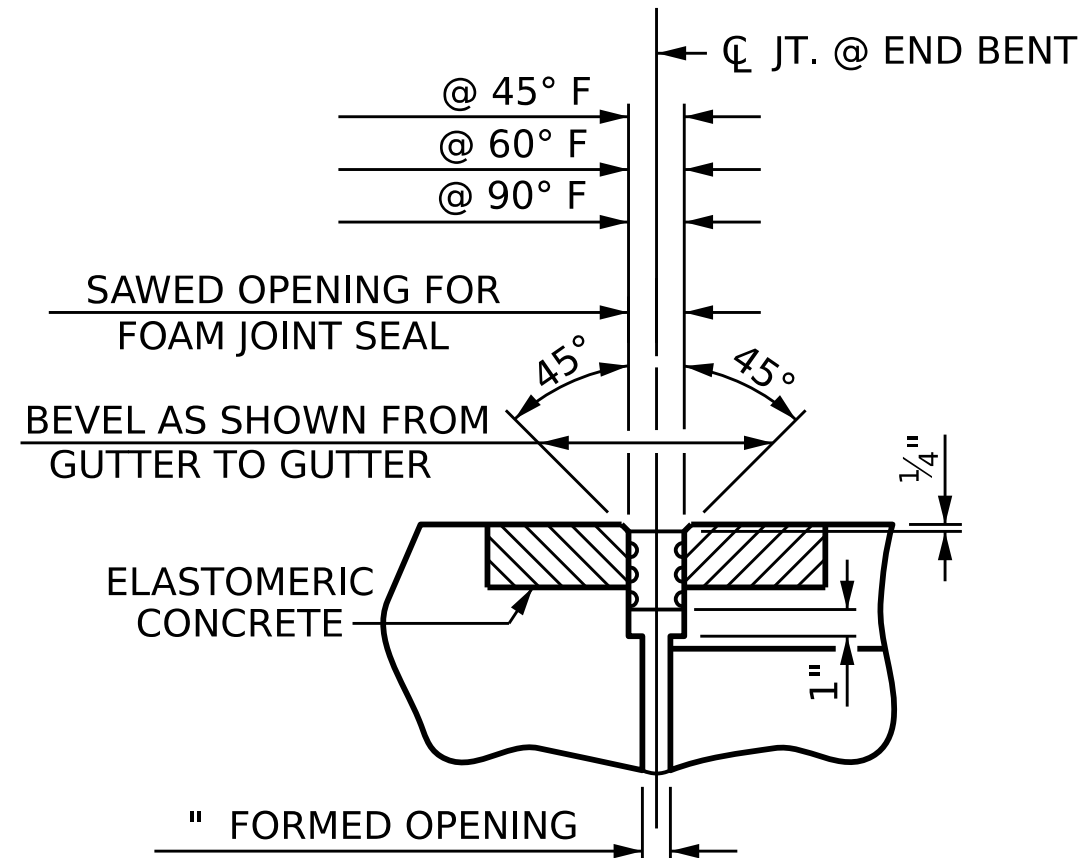


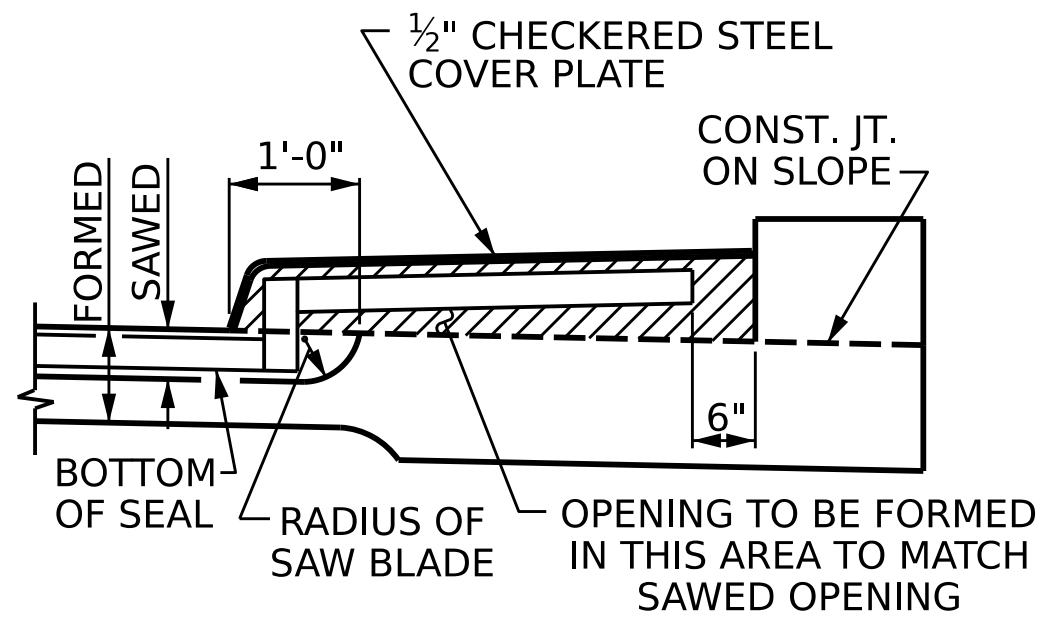
SECTION C-C
FOAM JOINT SEAL
(PRE-SAWED ELASTOMERIC
CONCRETE DIMENSIONS)



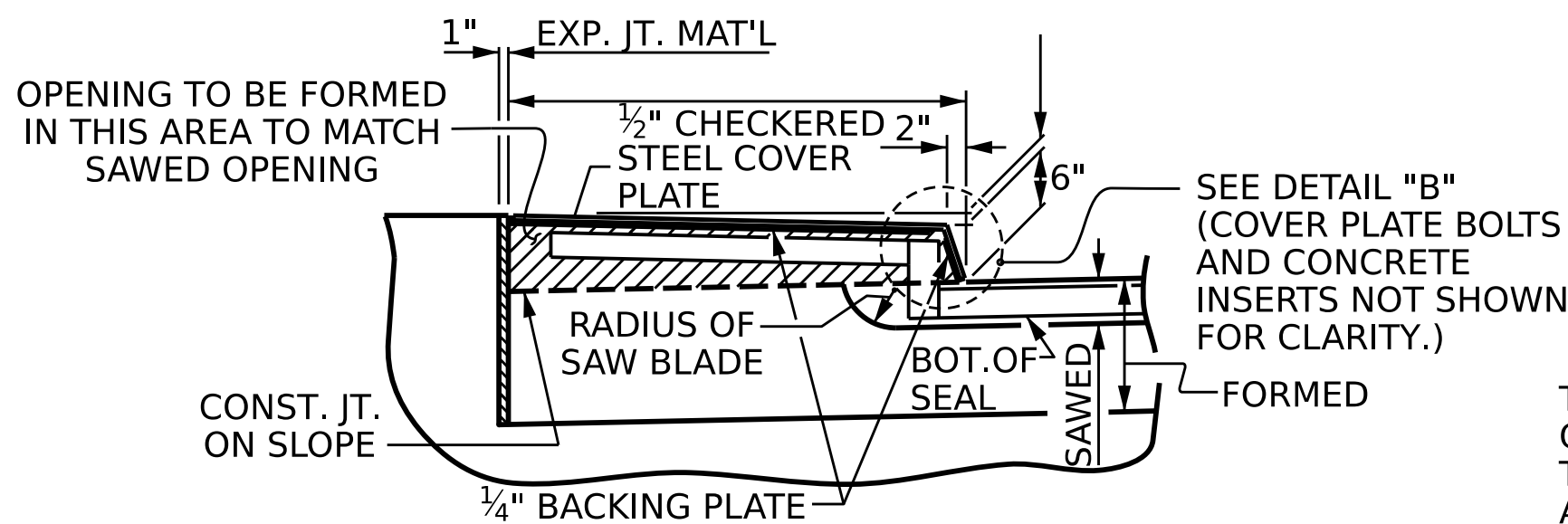
SECTION C-C
FOAM JOINT SEAL
(EXPANSION)

| ELASTOMERIC CONCRETE | |
|----------------------|----------------------------------|
| END BENT NO. | ELASTOMERIC CONCRETE * (CU. FT.) |
| 1 | |
| 2 | |
| TOTAL | |

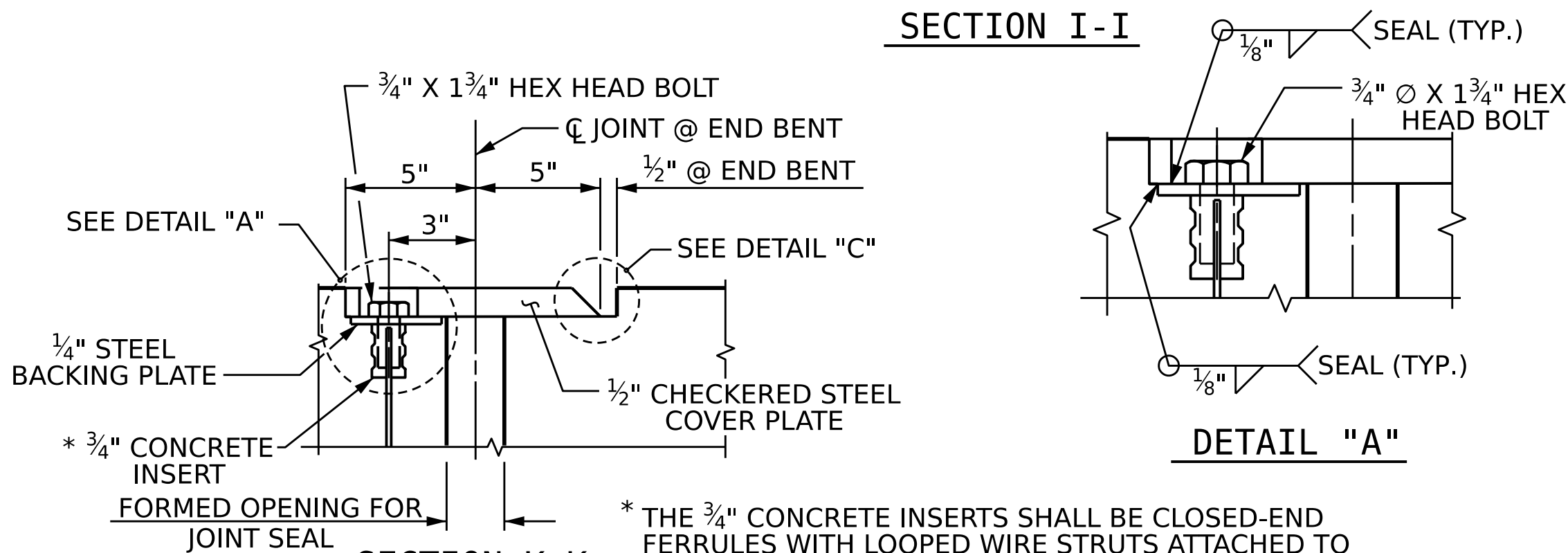
* BASED ON THE MINIMUM BLOCKOUT SHOWN.



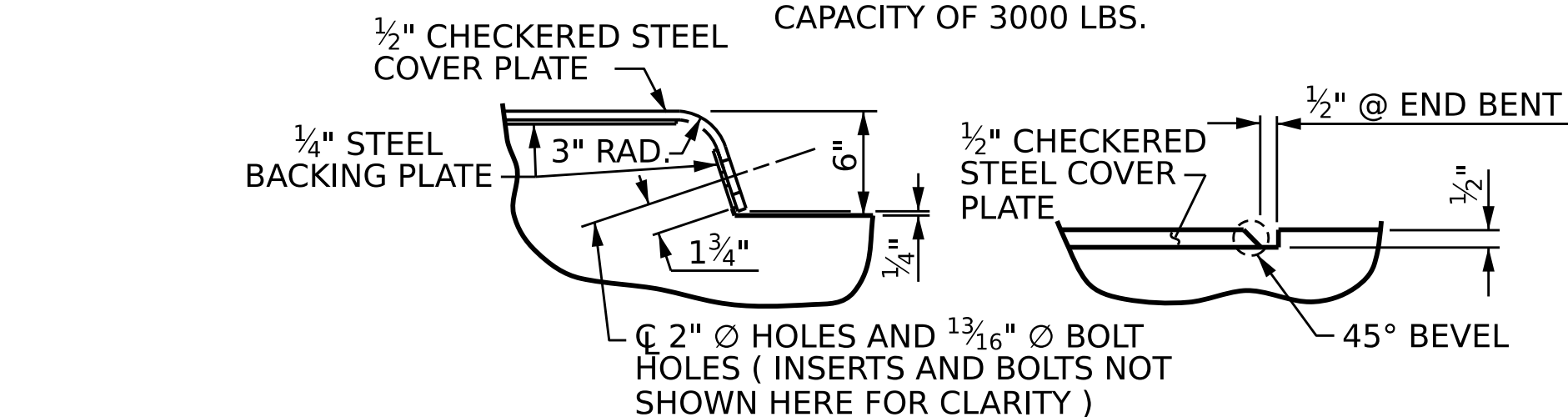
SECTION H-H



SECTION I-I



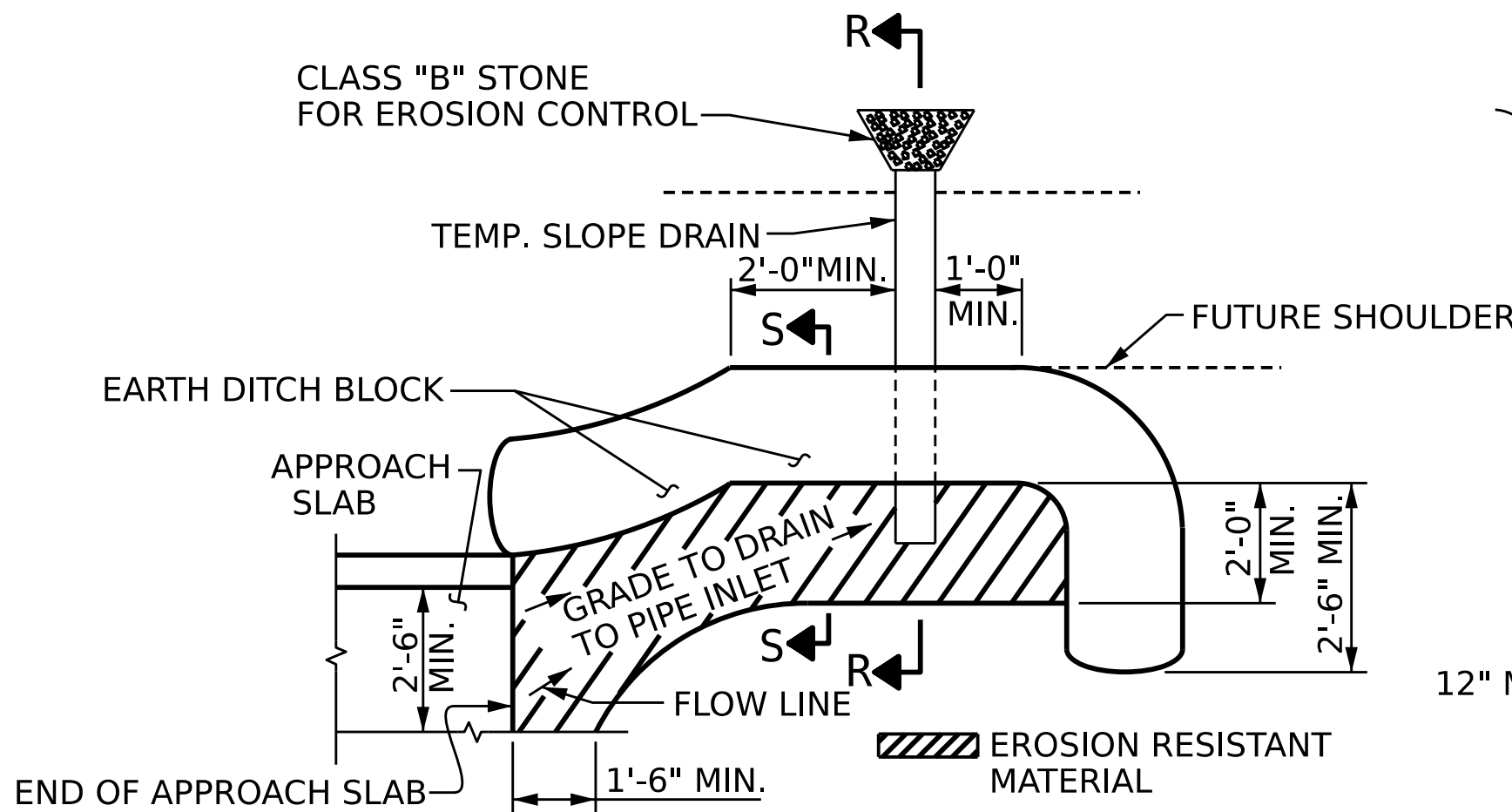
DETAIL "A"



DETAIL "B"

DETAIL "C"

JOINT SEAL DETAILS @ END BENT

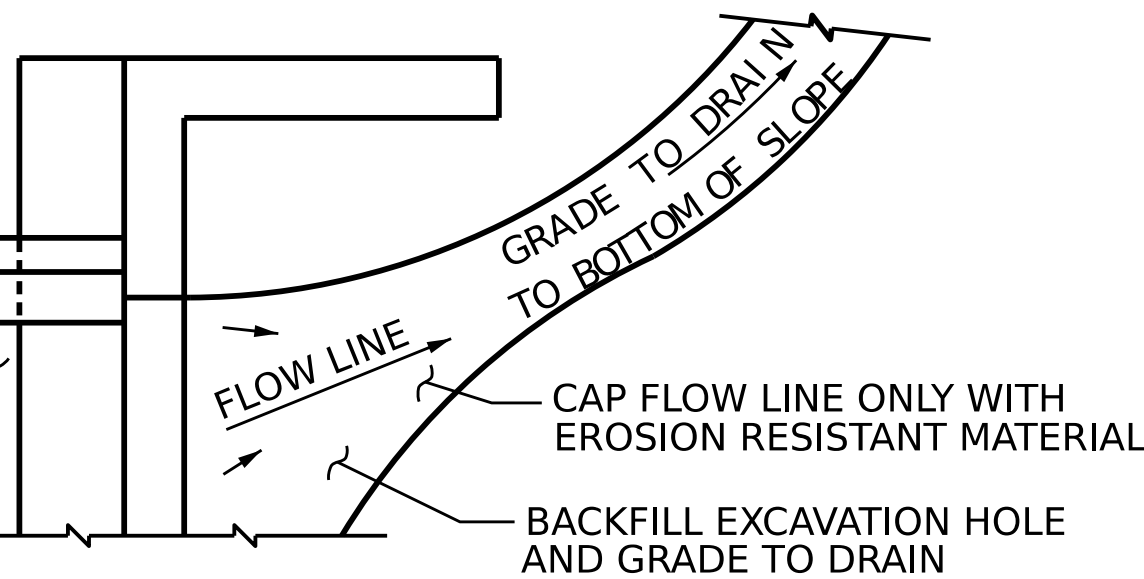


NOTE:
IMMEDIATELY AFTER THE CONSTRUCTION OF THE APPROACH SLAB, THE CONTRACTOR SHALL PROVIDE TEMPORARY BERM AND SLOPE DRAIN. CONTRACTOR SHALL GRADE TO PIPE INLET AND PROVIDE EROSION RESISTANT MATERIAL AS SHOWN. THE EROSION RESISTANT MATERIAL SHALL BE EITHER 1) ASPHALT PLANT MIX, TYPE 1 OR TYPE 2, MIN. 2" DEPTH, 2) EROSION CONTROL MAT, OR 3) CONCRETE, AS DIRECTED BY THE ENGINEER. THE SLOPE DRAIN SHALL CONSIST OF A NON-PERFORATED TEMPORARY DRAINAGE PIPE, 12 INCHES IN DIAMETER.

PLAN VIEW

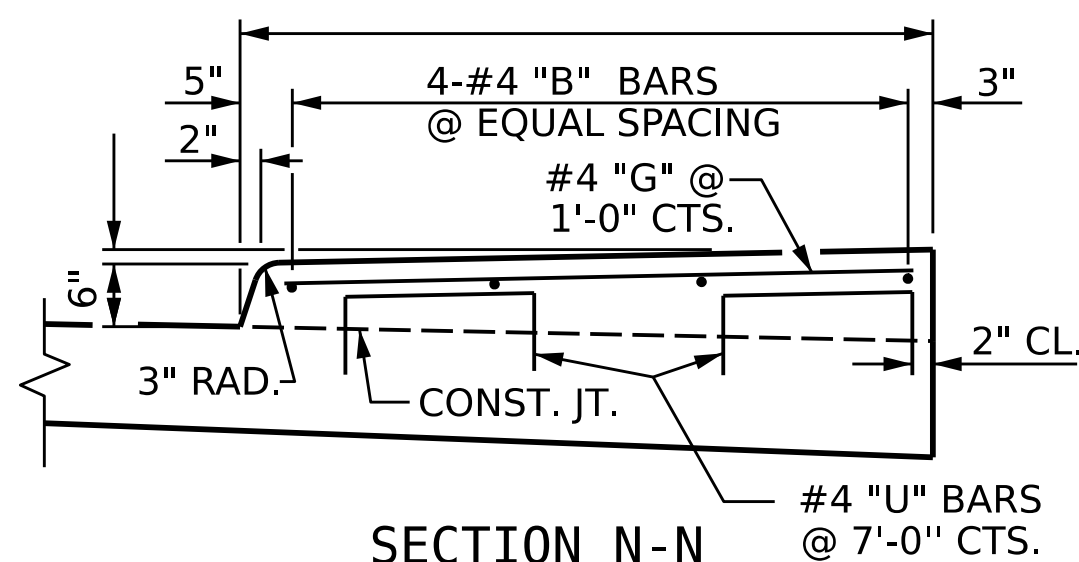
TEMPORARY BERM AND SLOPE DRAIN DETAILS

(TO BE USED WHEN SHOULDER BERM GUTTER IS REQUIRED)



NOTE: IF THE APPROACH SLAB IS NOT CONSTRUCTED IMMEDIATELY AFTER THE BACKFILLING OF THE END BENT EXCAVATION, GRADE TO DRAIN TO THE BOTTOM OF THE SLOPE AND PROVIDE EROSION RESISTANT MATERIAL, SUCH AS FIBERGLASS ROVING OR AS DIRECTED BY THE ENGINEER TO PREVENT SOIL EROSION AND TO PROTECT THE AREA ADJACENT TO THE STRUCTURE. THE CONTRACTOR WILL BE REQUIRED TO REMOVE THESE MATERIALS PRIOR TO CONSTRUCTION OF THE APPROACH SLAB.

TEMPORARY DRAINAGE DETAIL



SIDEWALK DETAILS

PROJECT NO. _____

_____ COUNTY

STATION: _____

SHEET 2 OF 2

STATE OF NORTH CAROLINA
DEPARTMENT OF TRANSPORTATION
RALEIGH

STANDARD

BRIDGE APPROACH SLAB DETAILS

| REVISIONS | | | | SHEET NO. |
|-----------|-----|-------|-----|--------------|
| NO. | BY: | DATE: | NO. | |
| 1 | | | 3 | TOTAL SHEETS |
| 2 | | | 4 | |

DOCUMENT NOT CONSIDERED
FINAL UNLESS ALL
SIGNATURES COMPLETED

STD. BAS4

| | |
|------------------------|--------------------|
| ASSEMBLED BY: | DATE : |
| CHECKED BY : | DATE : |
| DRAWN BY : FCJ 11/88 | REV. 6/13 MAA/GM |
| CHECKED BY : ARB 11/88 | REV. 12/17 MAA/THC |
| | REV. 5/18 MAA/THC |